

Iniciar Máquina Virtual

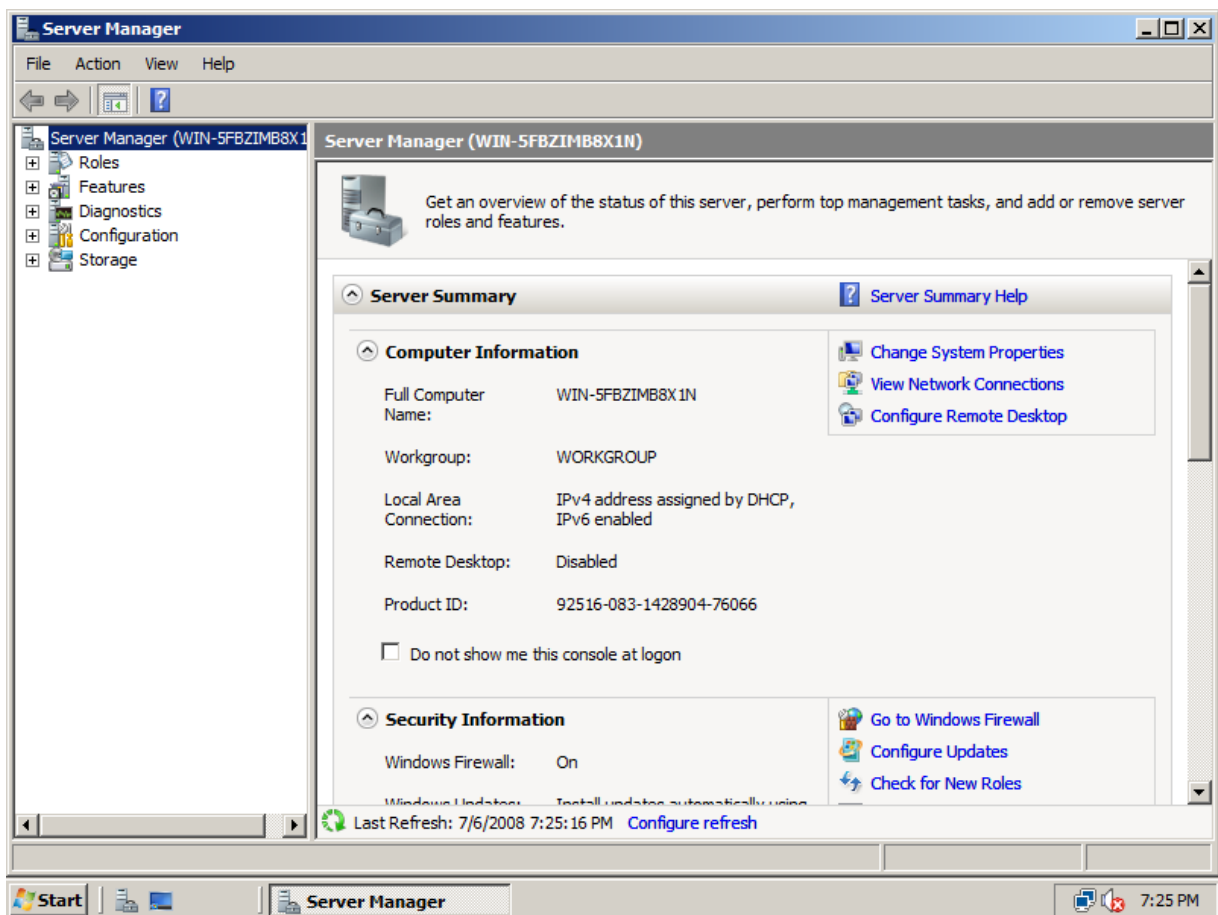
C:\win2008ipV6\win2008ipV6.vmc

Login:

Alt Gr + Del

Usuario: Administrator

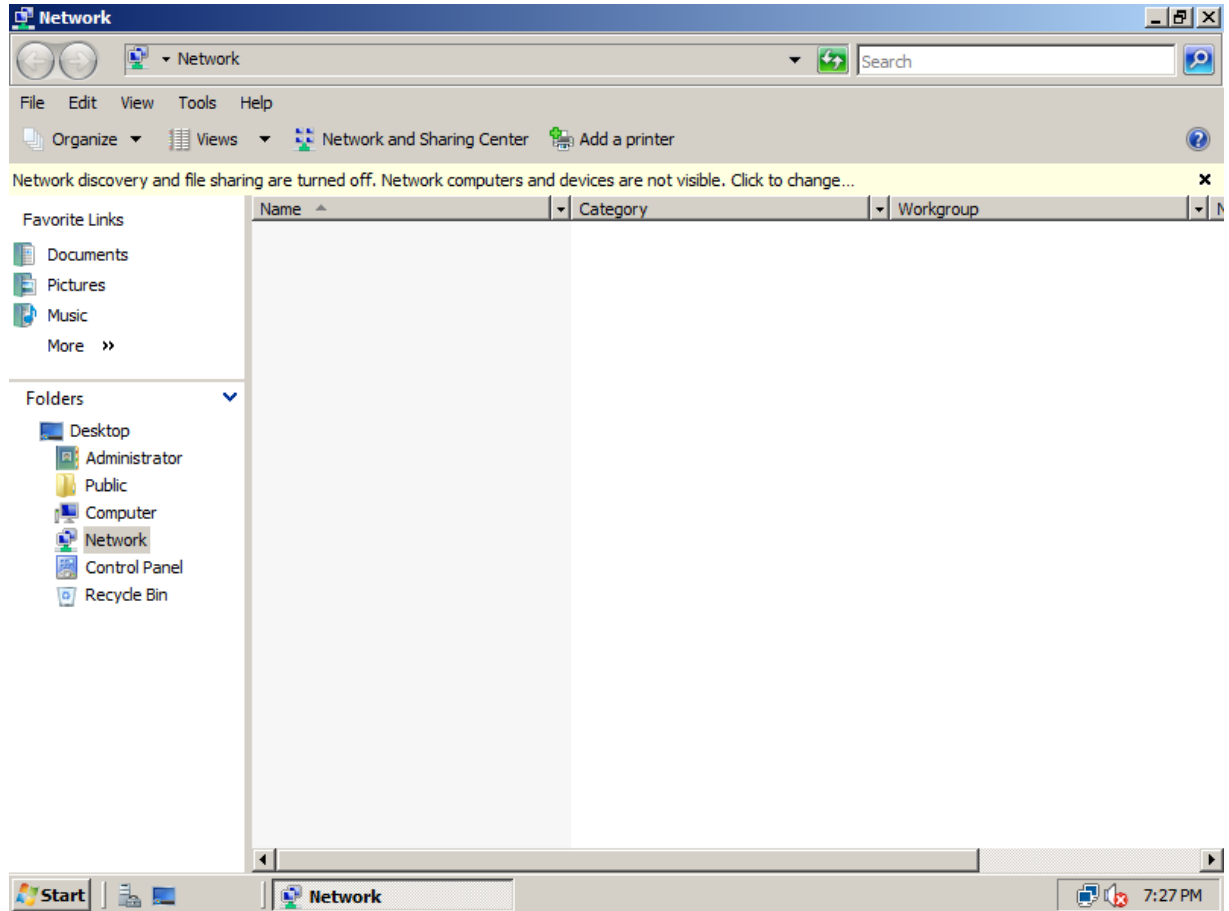
Contraseña: Latu2008



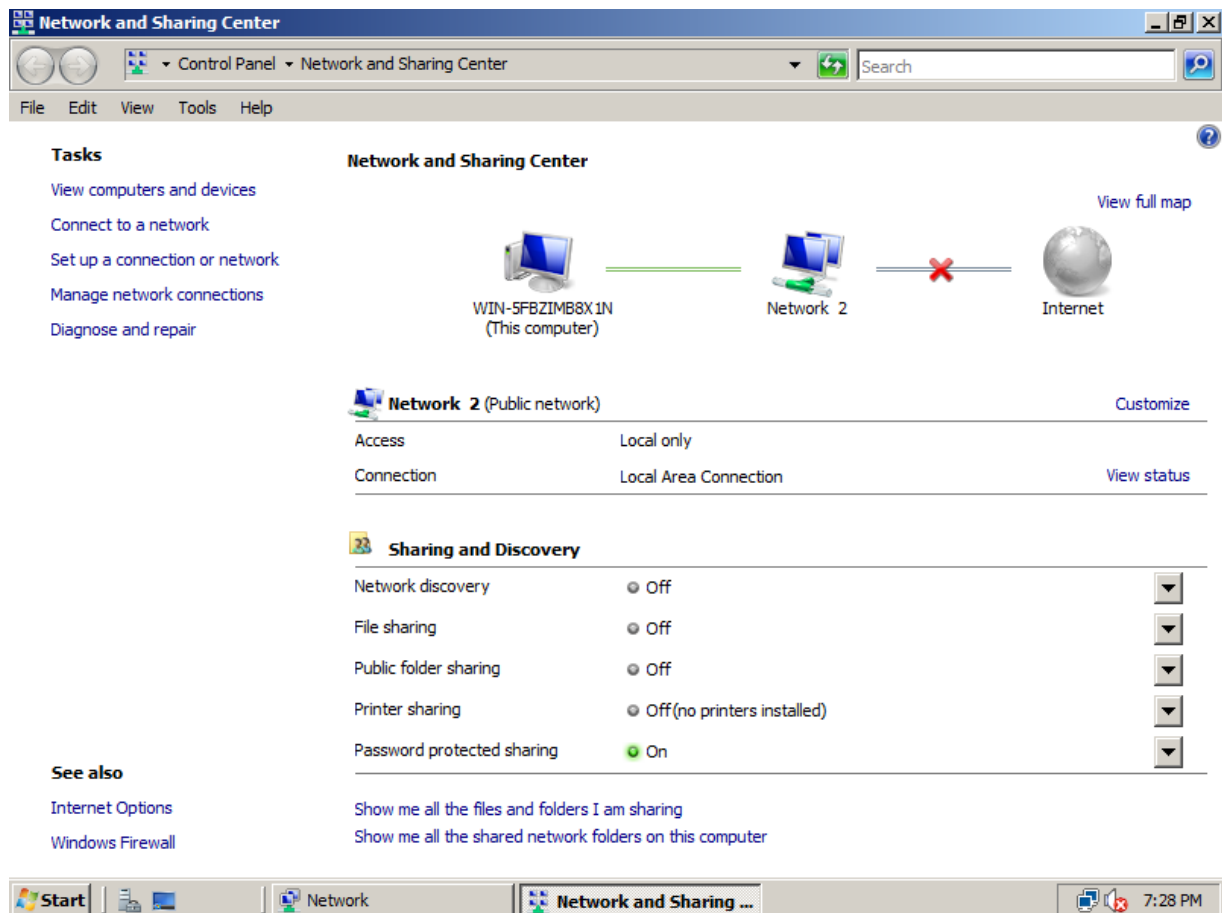
Cierre la herramienta de configuración.

1) Configurar Dirección IP

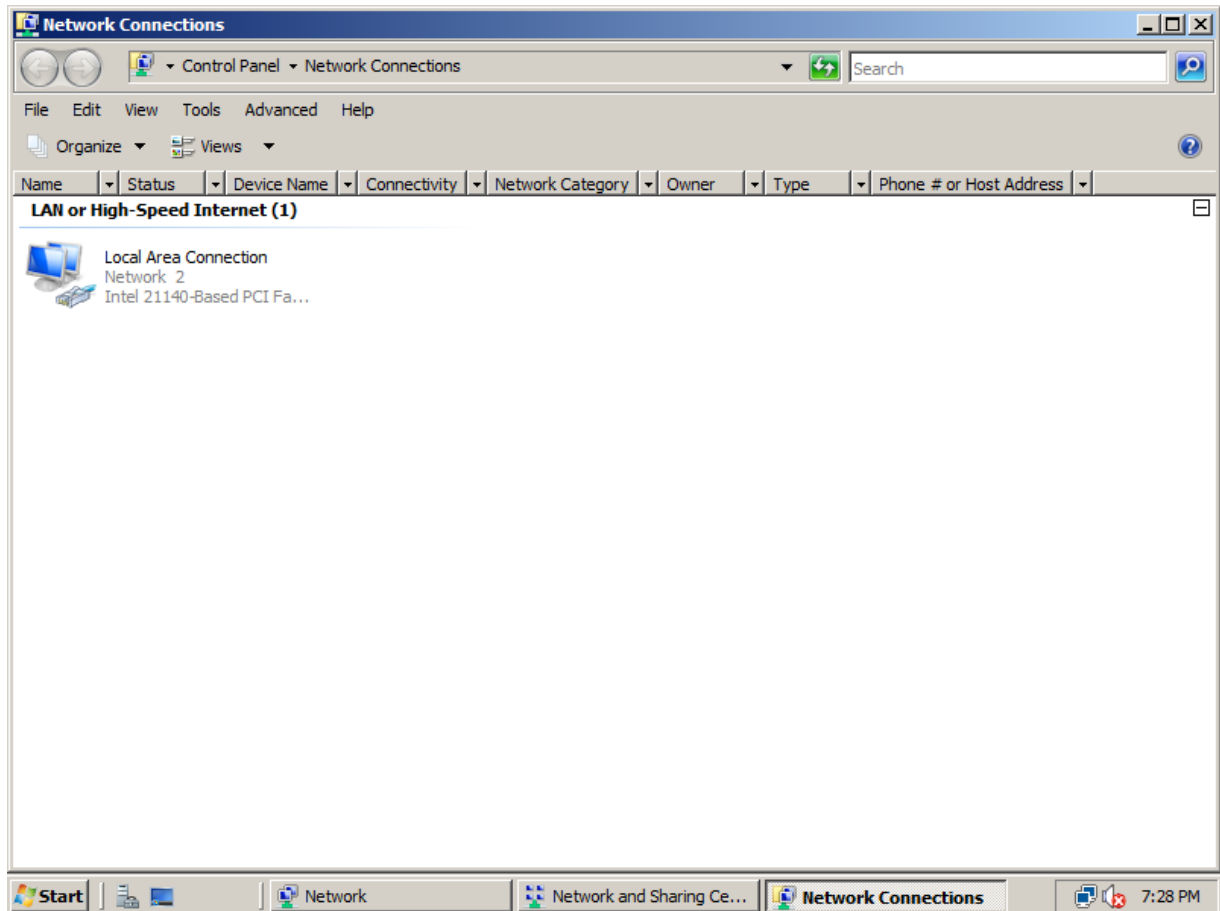
Start / Network



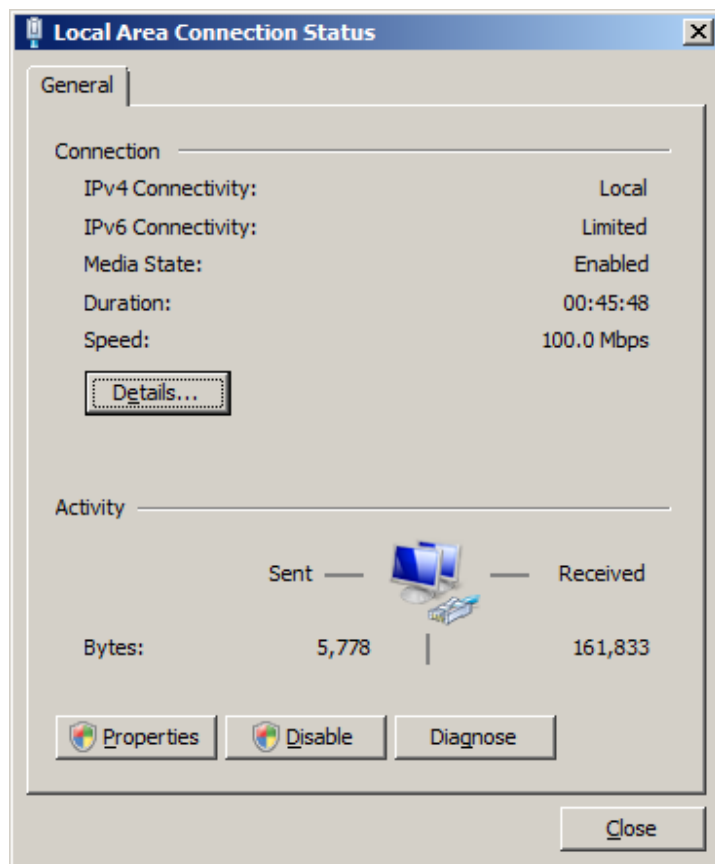
Seleccione: Network & Sharing Center



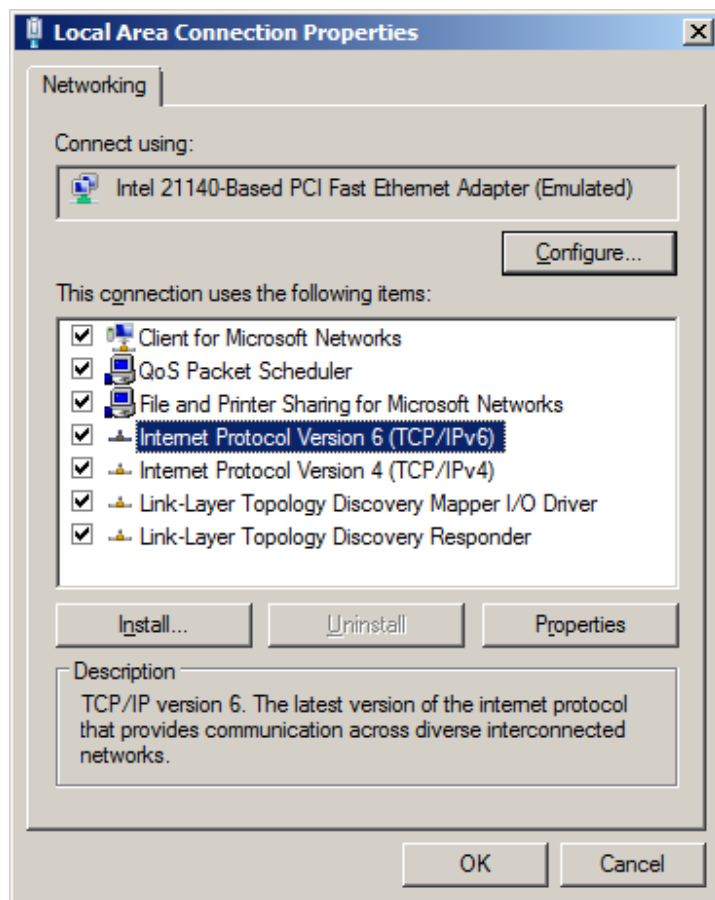
Selezione: Manage Network Connections



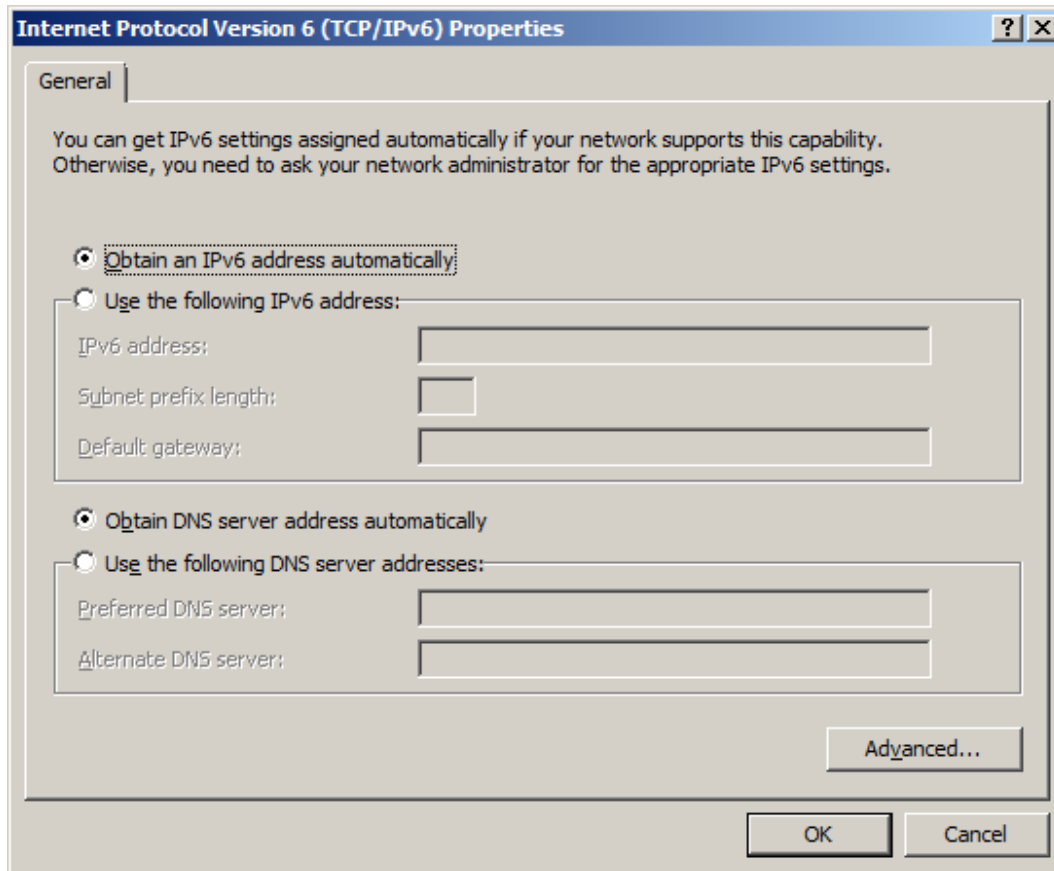
Doble click sobre "local area connection".



Seleccione Propiedades:



Doble click en TCP/IPV6

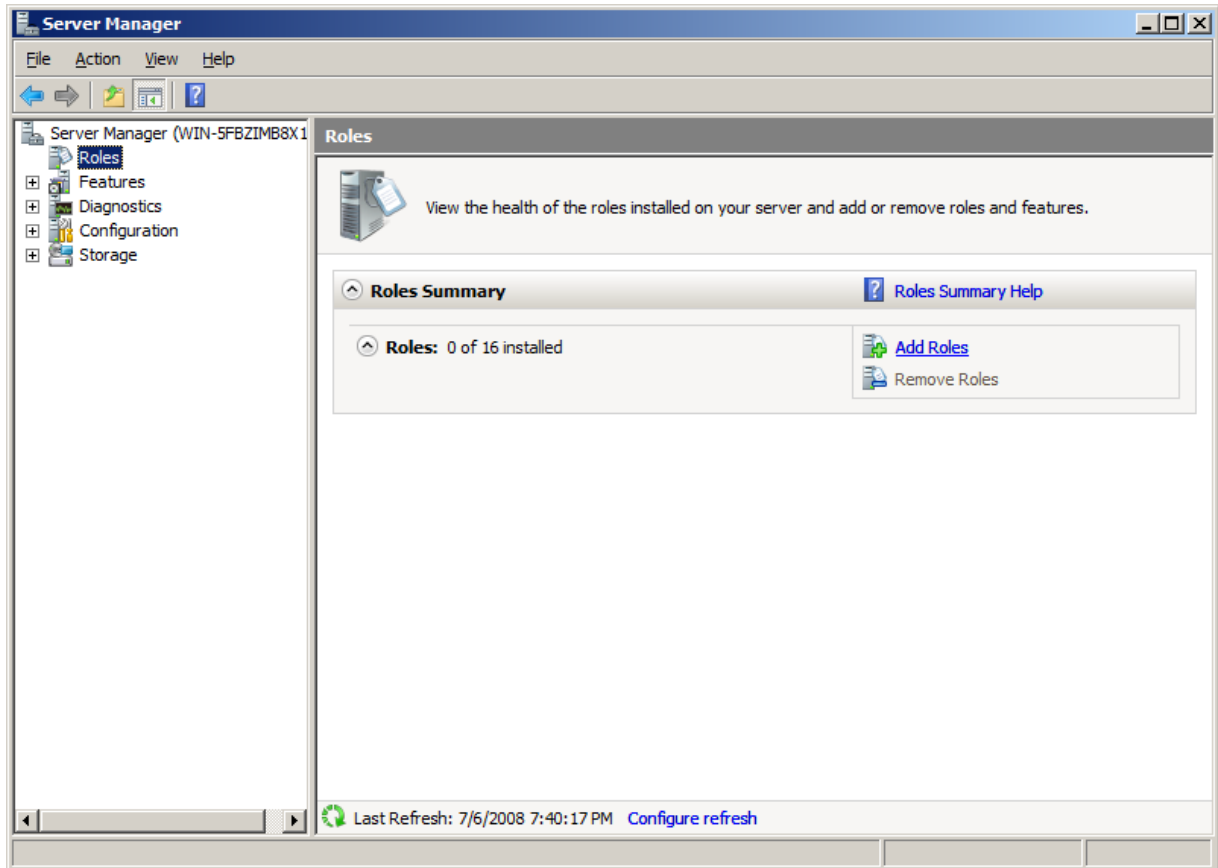


Confirme y cierre todas las ventanas. Abra una ventana de comando y verifique la configuración con ipconfig.

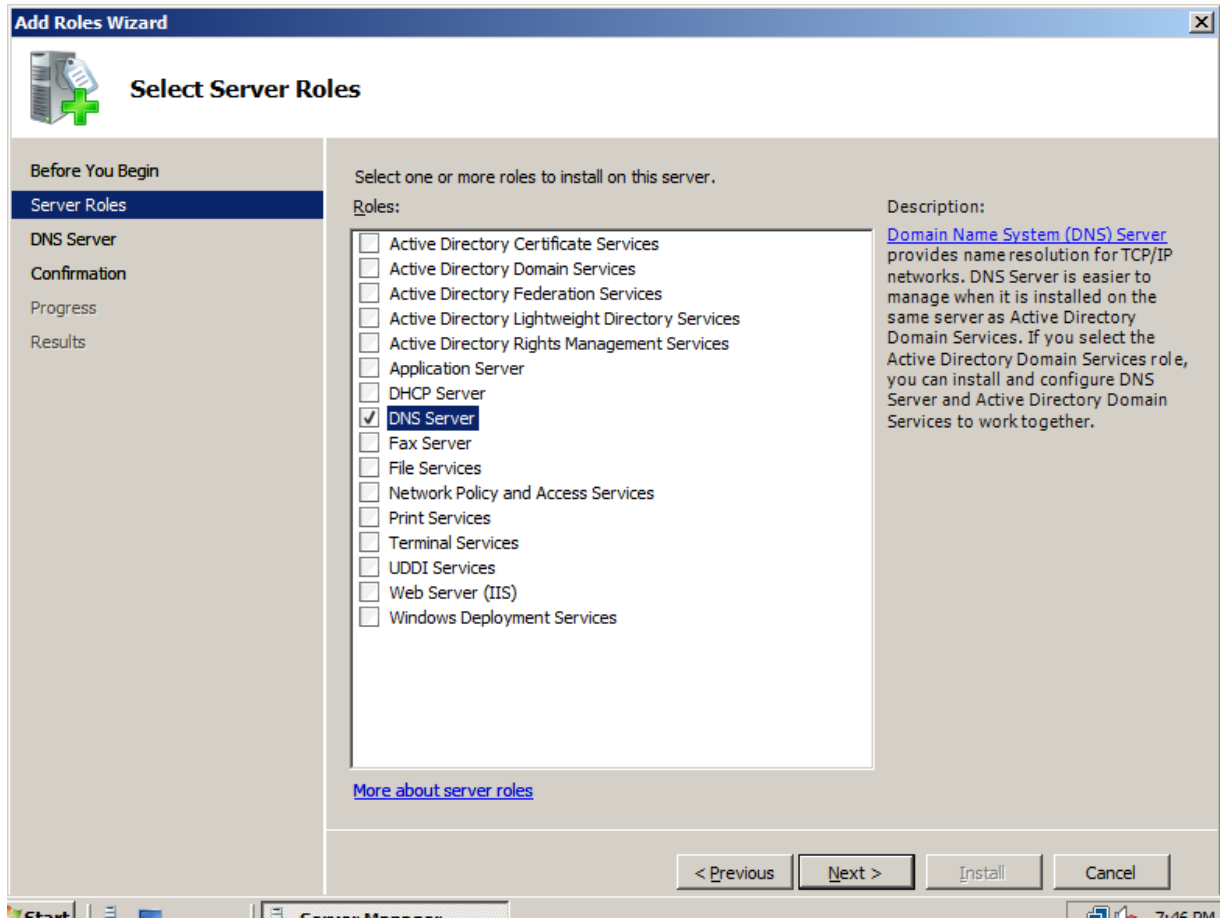
Configure también una dirección IP v4 (10.1.1.1 con DNS 10.1.1.1). Esto se realiza para evitar advertencias en los próximos pasos de configuración de servicios.

2) Configurar el servidor DNS

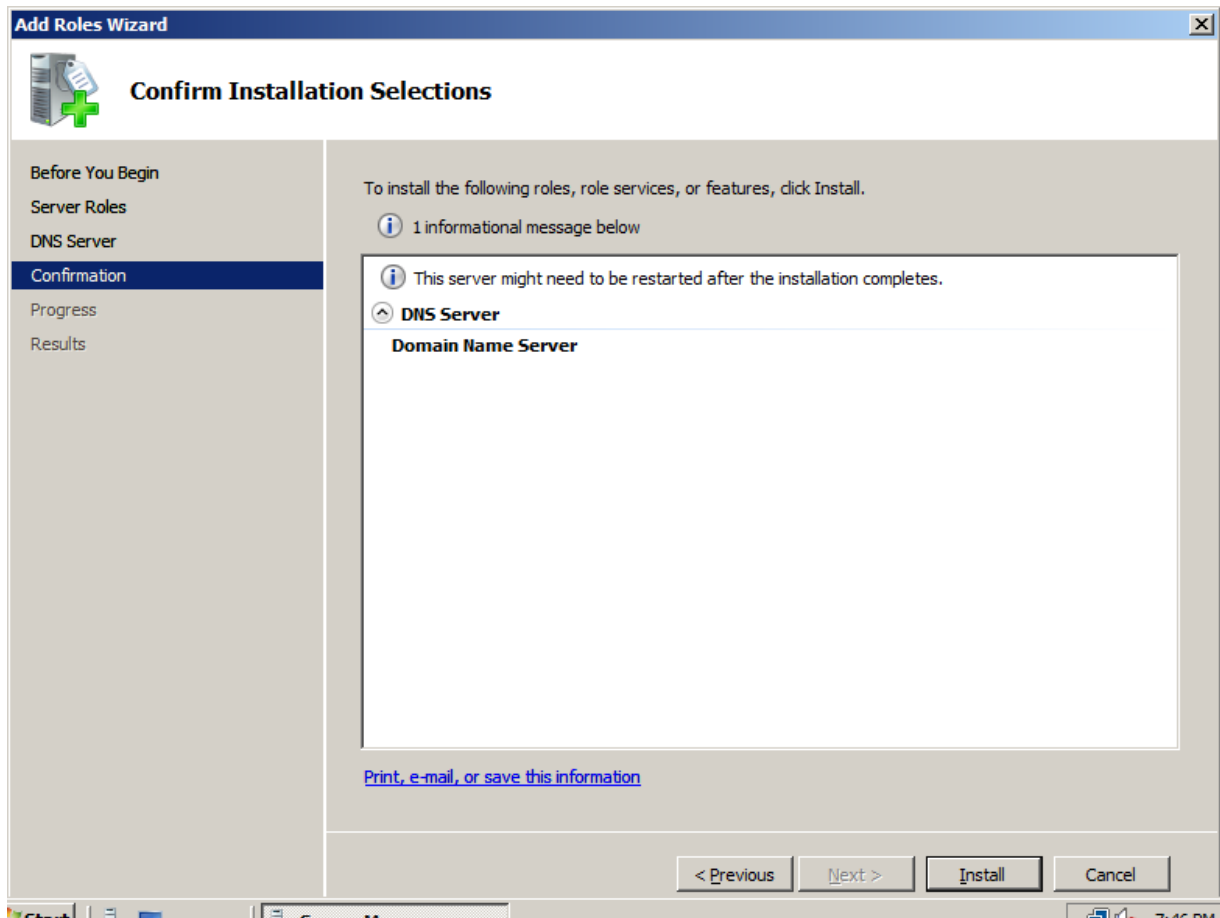
Abra la herramienta "Server Manager" y seleccione Roles, Add Roles.



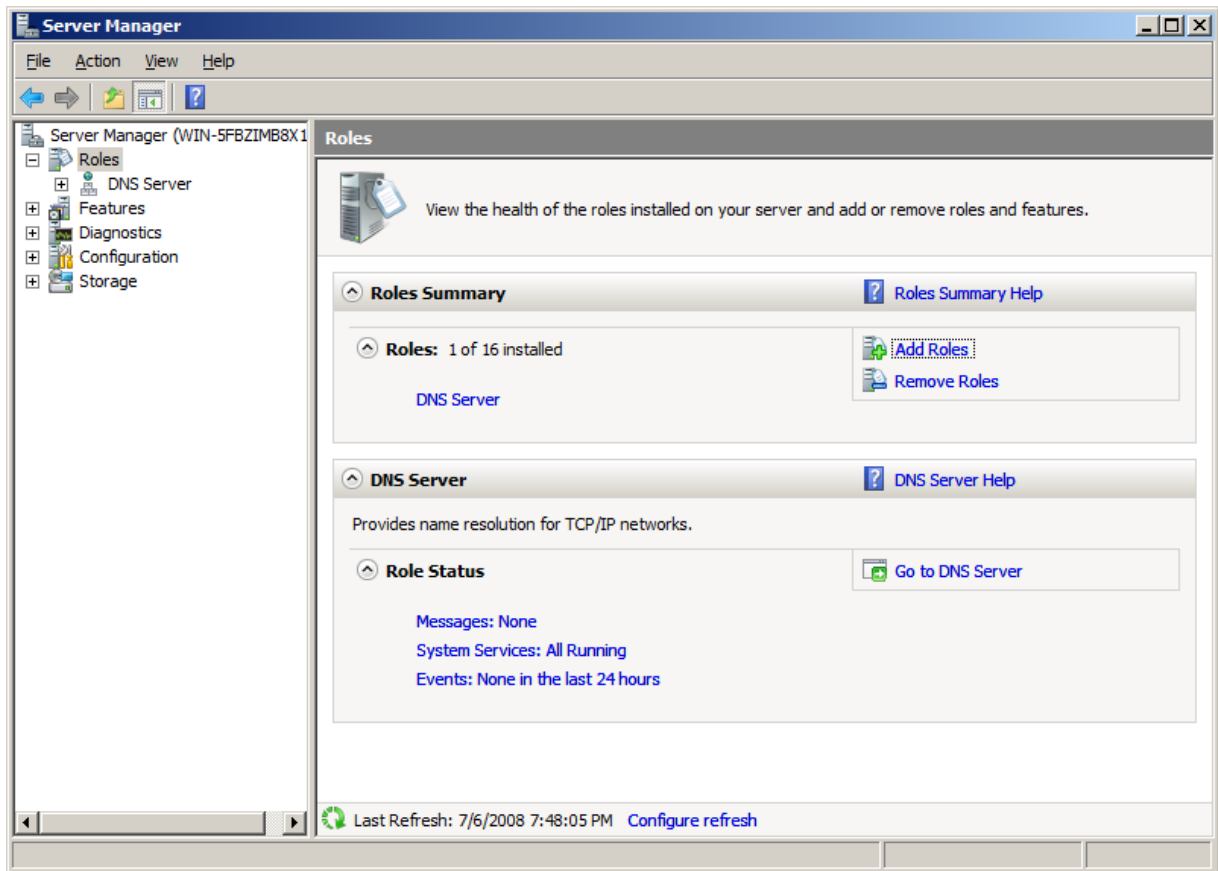
Selezione DNS Server



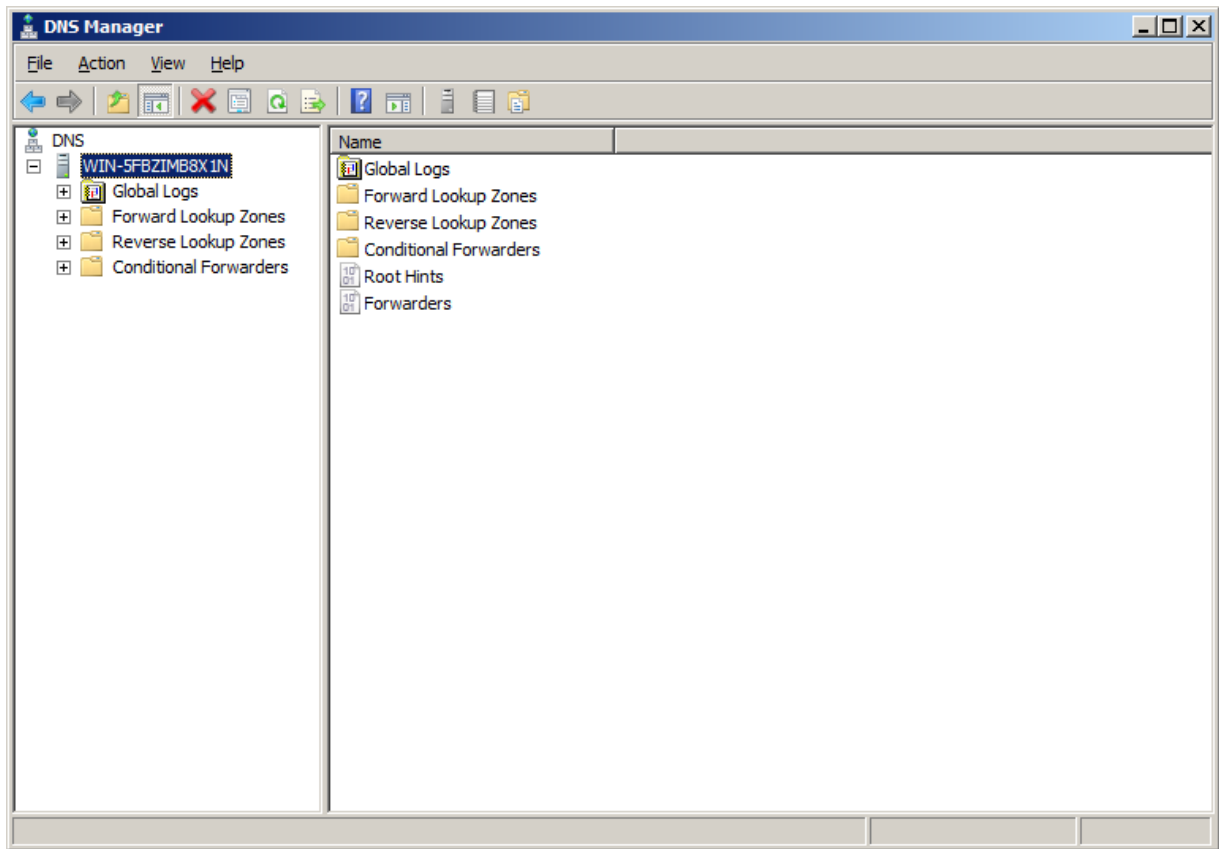
Selezione Install



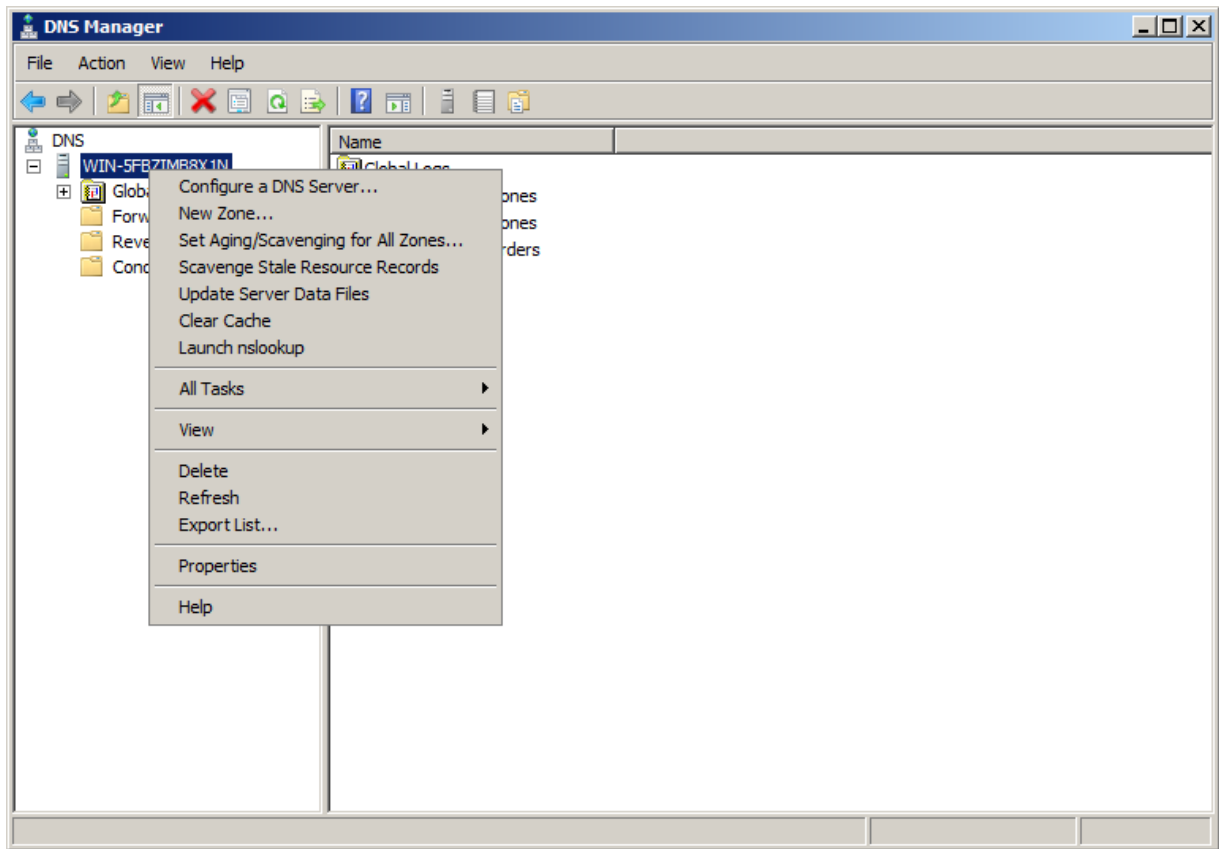
Verifique el estado del servidor DNS: Seleccione "Go to DNS Server"



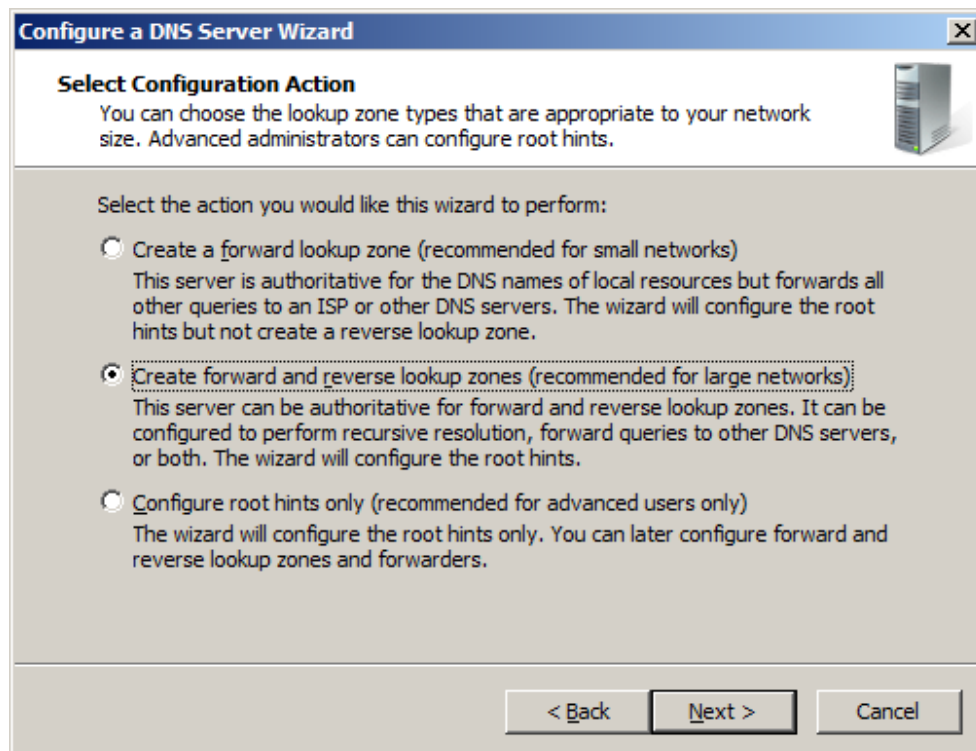
Selezione Start DNS



Seleccione Configure DNS Server:

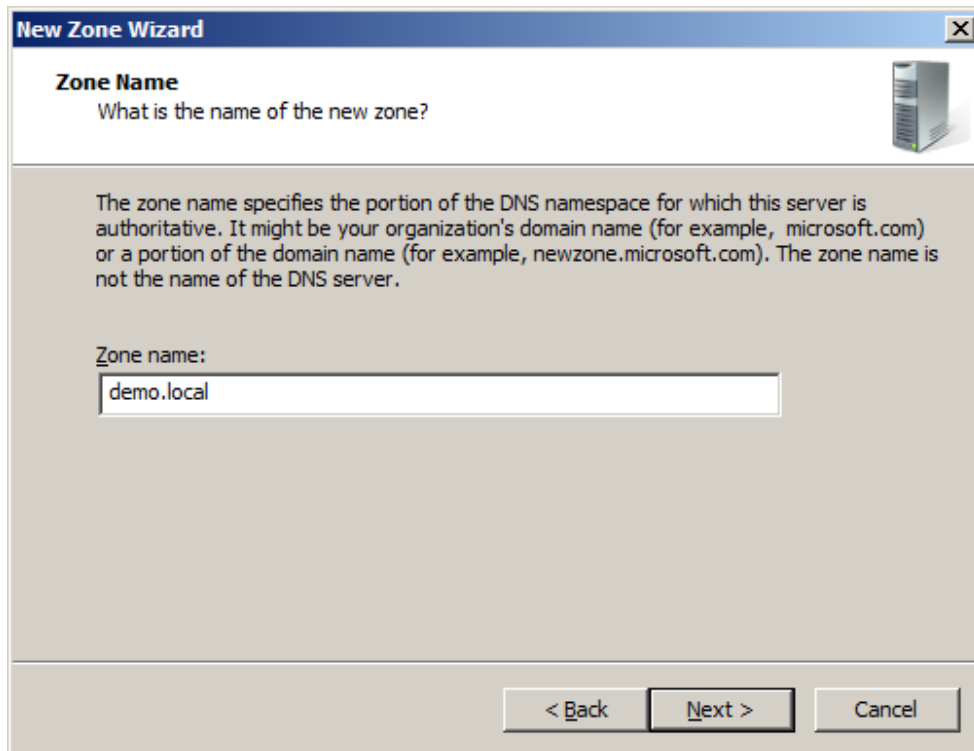


Configure una zona y su correspondiente reverse lookup



Seleccione Primary Zone.

Ingrese un nombre para la zona.



New Zone Wizard

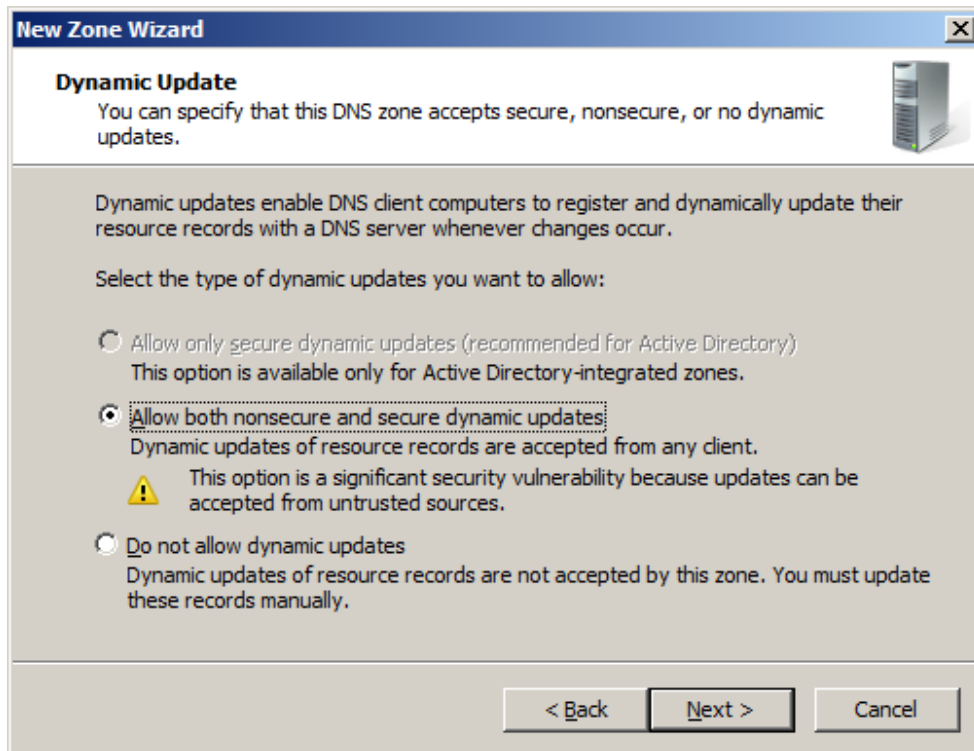
Zone Name
What is the name of the new zone?

The zone name specifies the portion of the DNS namespace for which this server is authoritative. It might be your organization's domain name (for example, microsoft.com) or a portion of the domain name (for example, newzone.microsoft.com). The zone name is not the name of the DNS server.

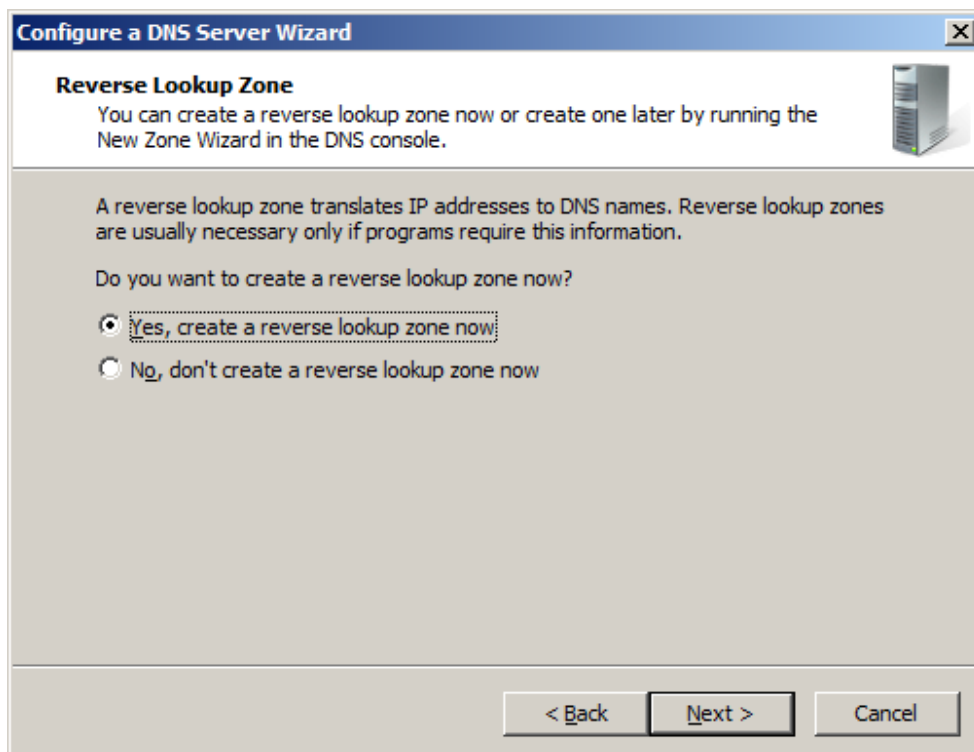
Zone name:
demo.local

< Back Next > Cancel

Selección de Dynamic Updates



Confirme la creación de la zona de reverse lookup



Selezione Primary e IPV6 Reverse

New Zone Wizard [X]

Zone Type
The DNS server supports various types of zones and storage.

Select the type of zone you want to create:

- Primary zone**
Creates a copy of a zone that can be updated directly on this server.
- Secondary zone**
Creates a copy of a zone that exists on another server. This option helps balance the processing load of primary servers and provides fault tolerance.
- Stub zone**
Creates a copy of a zone containing only Name Server (NS), Start of Authority (SOA), and possibly glue Host (A) records. A server containing a stub zone is not authoritative for that zone.

Store the zone in Active Directory (available only if DNS server is a writeable domain controller)

< Back Next > Cancel

New Zone Wizard [X]

Reverse Lookup Zone Name
A reverse lookup zone translates IP addresses into DNS names.

Choose whether you want to create a reverse lookup zone for IPv4 addresses or IPv6 addresses.

- IPv4 Reverse Lookup Zone**
- IPv6 Reverse Lookup Zone**

< Back Next > Cancel

New Zone Wizard [X]

Reverse Lookup Zone Name
A reverse lookup zone translates IP addresses into DNS names.

To name the reverse lookup zone, enter an IPv6 address prefix to auto generate the zone name(s). Depending on the prefix you enter, up to 8 zones may be created.

IPv6 Address Prefix:
2001::/32

Reverse Lookup Zones
 0.0.0.0.1.0.0.2.ip6.arpa

< Back Next > Cancel

Pruebe de explorar la interface del DNS, creando registros AAAA u otros.

New Host [X]

Name (uses parent domain name if blank):
test

Fully qualified domain name (FQDN):
test.demo.local.

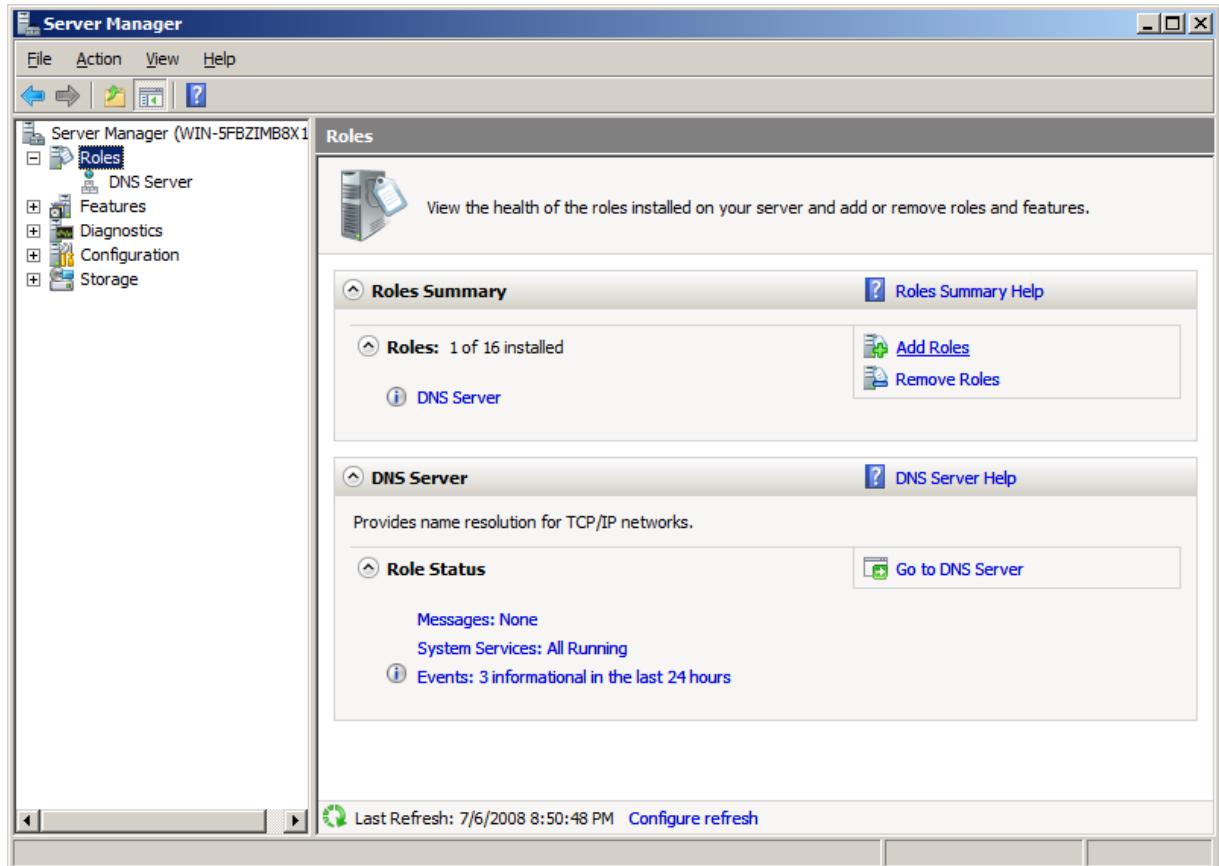
IP address:
2001::5

Create associated pointer (PTR) record


Add Host Cancel

3) Instalando el servicio de DHCP

Abra el server manager y agregue un nuevo rol. Servidor de DHCP



Add Roles Wizard [X]



Select Server Roles

Before You Begin

- Server Roles
- DHCP Server
 - Network Connection Bindings
 - IPv4 DNS Settings
 - IPv4 WINS Settings
 - DHCP Scopes
 - DHCPv6 Stateless Mode
 - IPv6 DNS Settings
- Confirmation
- Progress
- Results

Select one or more roles to install on this server.

Roles:

- Active Directory Certificate Services
- Active Directory Domain Services
- Active Directory Federation Services
- Active Directory Lightweight Directory Services
- Active Directory Rights Management Services
- Application Server
- DHCP Server**
- DNS Server (Installed)
- Fax Server
- File Services
- Network Policy and Access Services
- Print Services
- Terminal Services
- UDDI Services
- Web Server (IIS)
- Windows Deployment Services

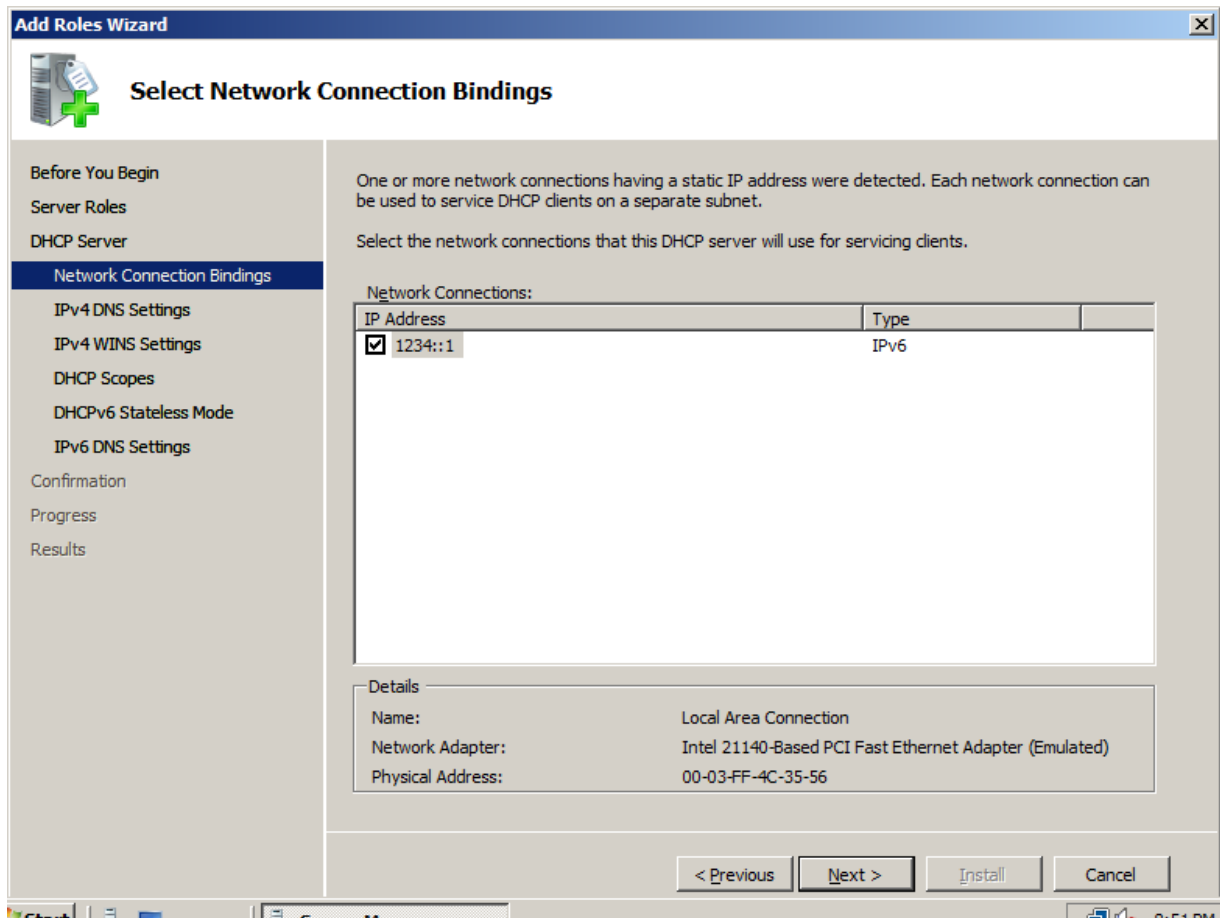
Description:
[Dynamic Host Configuration Protocol \(DHCP\) Server](#) enables you to centrally configure, manage, and provide temporary IP addresses and related information for client computers.

[More about server roles](#)

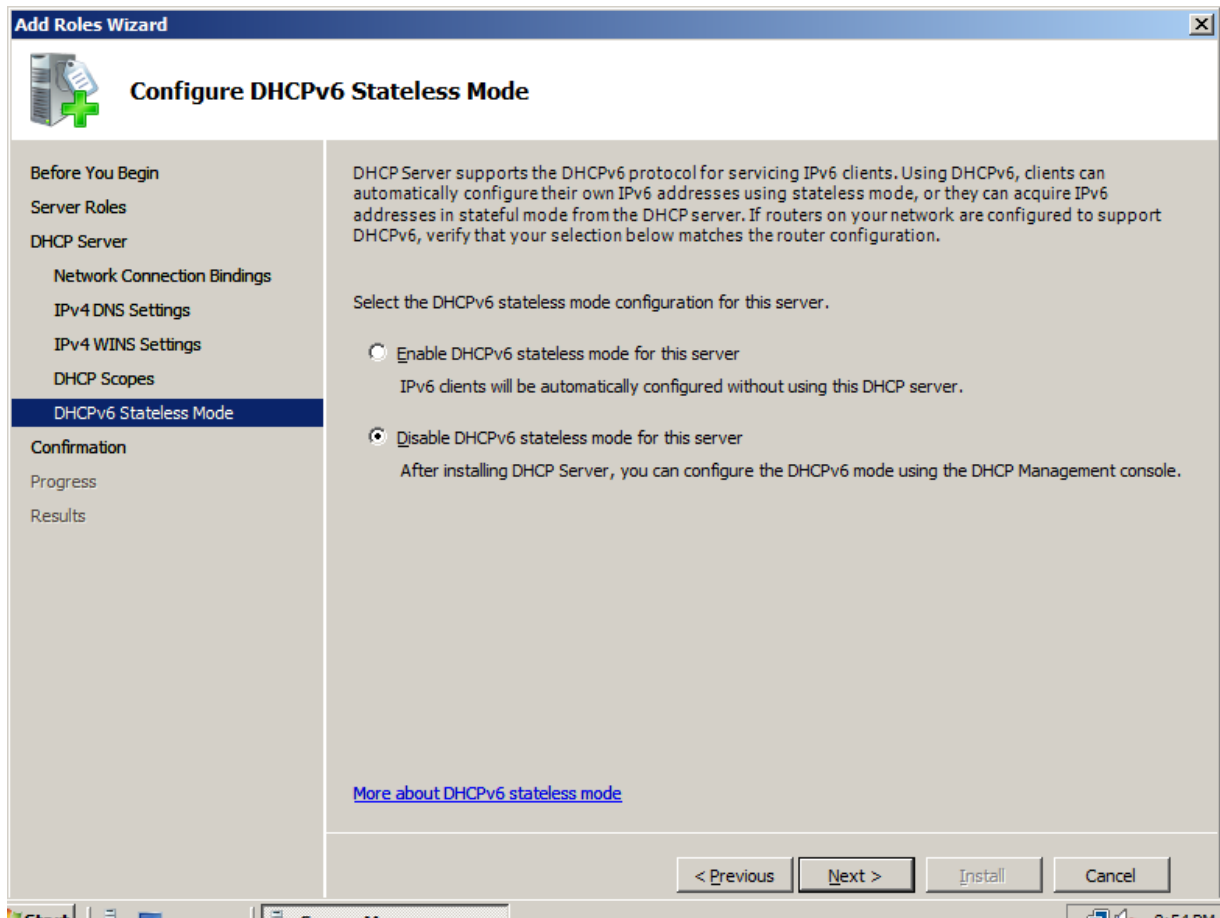
< Previous Next > Install Cancel

Start Server Manager 8:51 PM

Seleccione la interface de red que servirá el Servicio de DHCP.

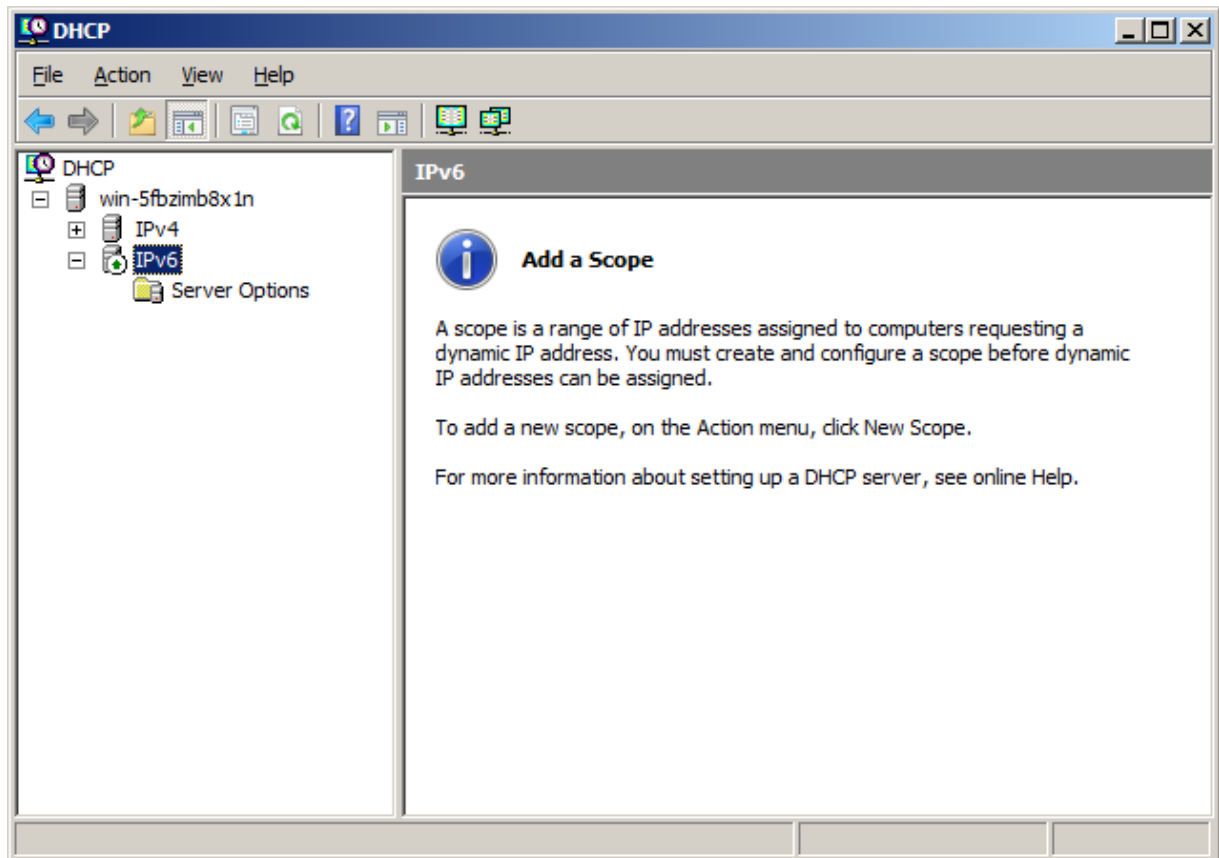


Configure la opción de dhcpV6 STATELESS MODE y deshabilite la misma.



Complete el asistente.


Selezione Start DHCP



Agregue un Scope IPv6

New Scope Wizard

Scope Name
You have to provide an identifying scope name. You also have the option of providing a description.



Type a name and description for this scope. This information helps you quickly identify how the scope is to be used on your network.

Name:

Description:

< Back Next > Cancel

Defina la red atendida

New Scope Wizard

Scope Prefix
You have to provide a prefix to create the scope. You also have the option of providing a preference value for the scope.

Enter the IPv6 Prefix for the addresses that the scope distributes and the preference value for the scope.

Prefix /64

Preference

< Back Next > Cancel

Agregue un rango de direcciones (scope)

New Scope Wizard

Add Exclusions
Exclusions are addresses or a range of addresses that are not distributed by the server.

Type the IPv6 address range that you want to exclude for the given scope. If you want to exclude a single address, type an identifier in Start IPv6 Address only.

Start IPv6 Address: 1234::0000:0000:0000:0003

End IPv6 Address: 1234::0000:0099:0000:0000

Excluded address range:

1234::3 to 1234::99:0:0

< Back Next > Cancel

Agregue la duración del Lease

New Scope Wizard

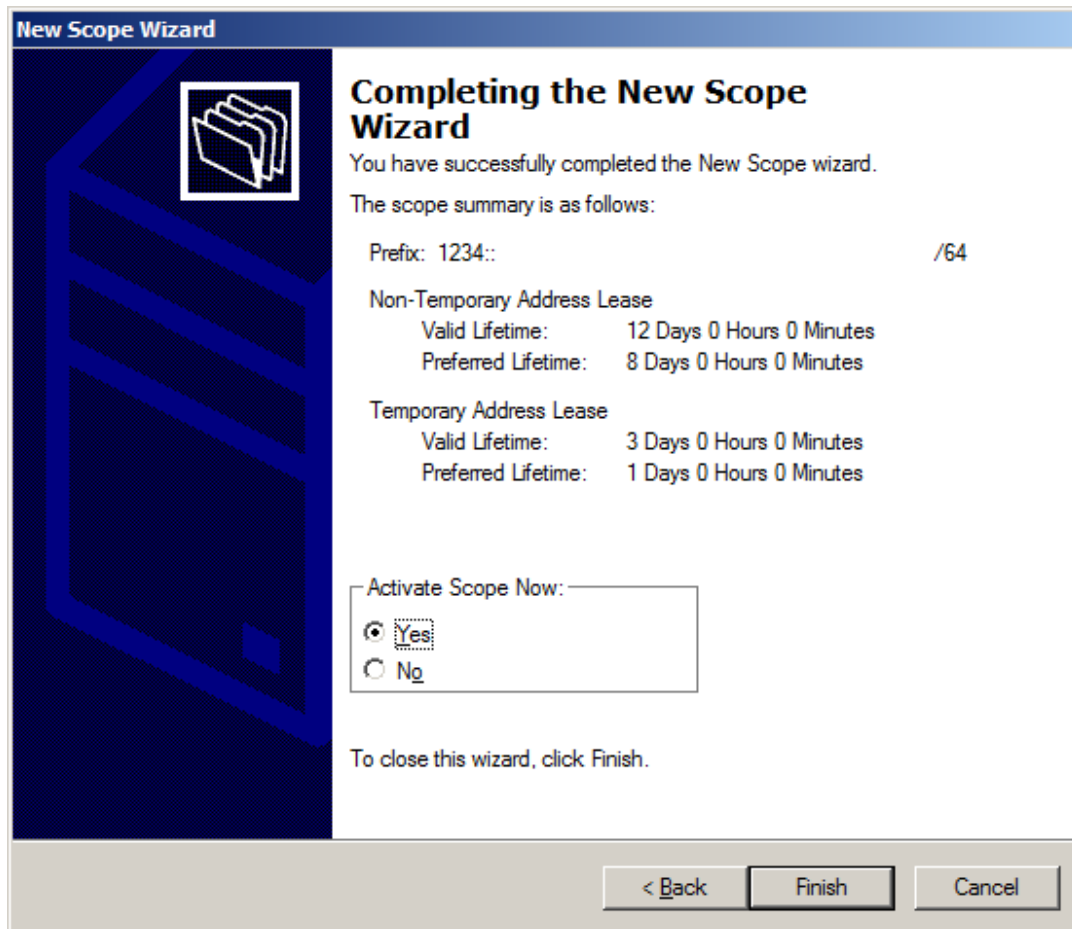
Scope Lease
The lease duration specifies how long a client can use an IPv6 address obtained from this scope.

Lease durations should typically be equal to the average time the computer is connected to the same physical network.

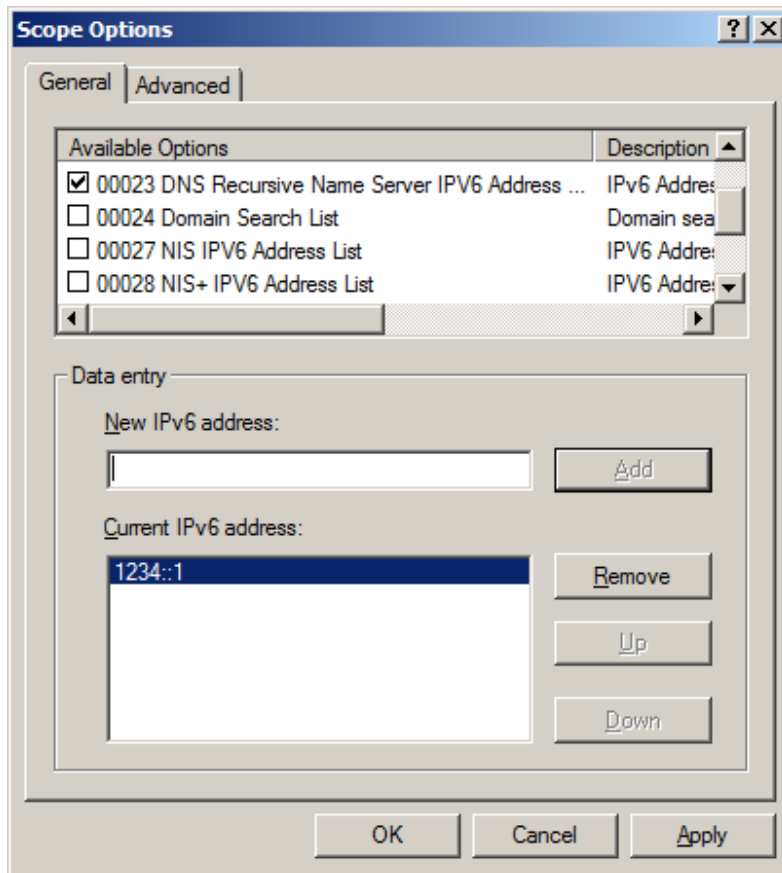
Non Temporary Address(IANA)			Temporary Address(IATA)		
Preferred Life Time			Preferred Life Time		
Days:	Hours:	Minutes:	Days:	Hours:	Minutes:
8	0	0	1	0	0
Valid Life Time			Valid Life Time		
Days:	Hours:	Minutes:	Days:	Hours:	Minutes:
12	0	0	3	0	0

< Back Next > Cancel

Finalmente complete la configuración sin activar el scope.

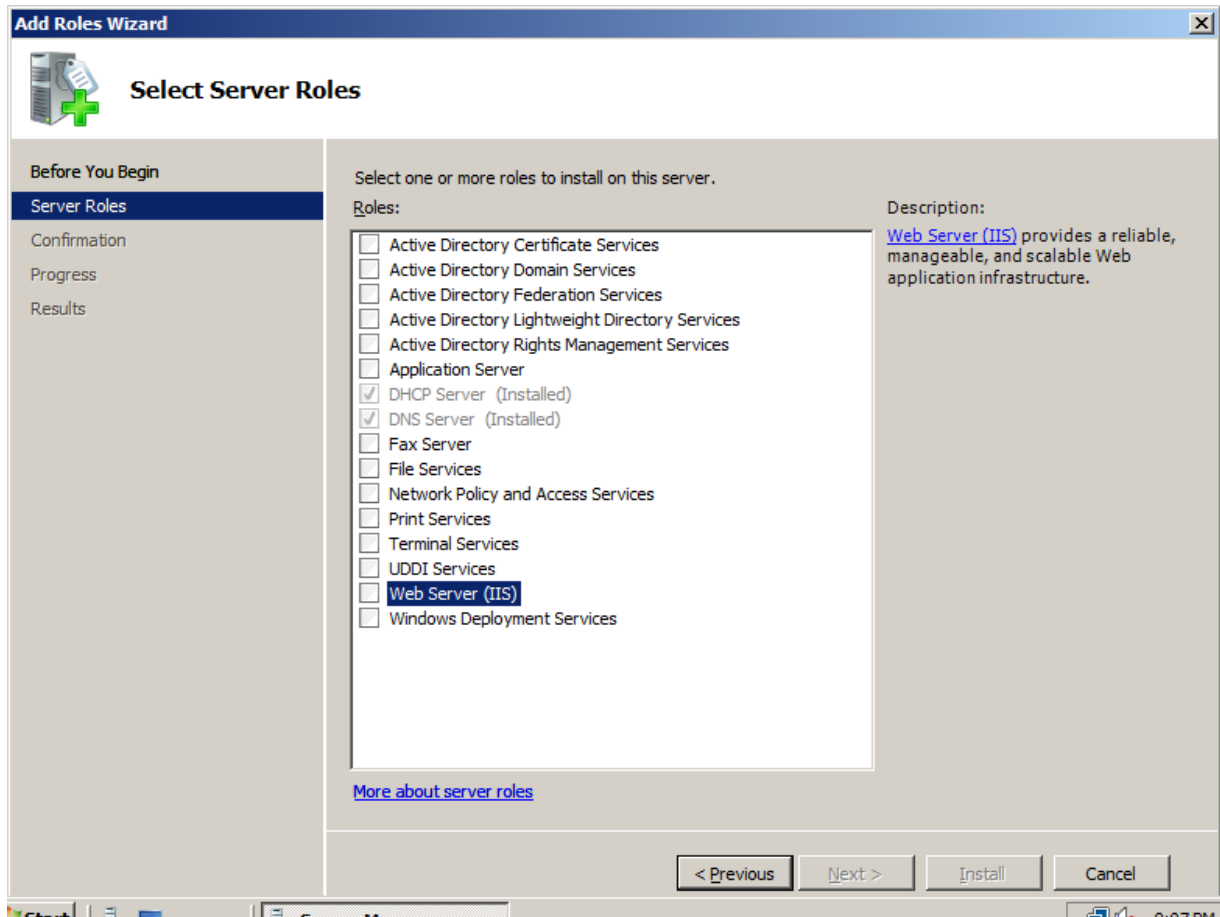


En las opciones del Scope, configure algunos parámetros adicionales, tales como el servidor DNS.

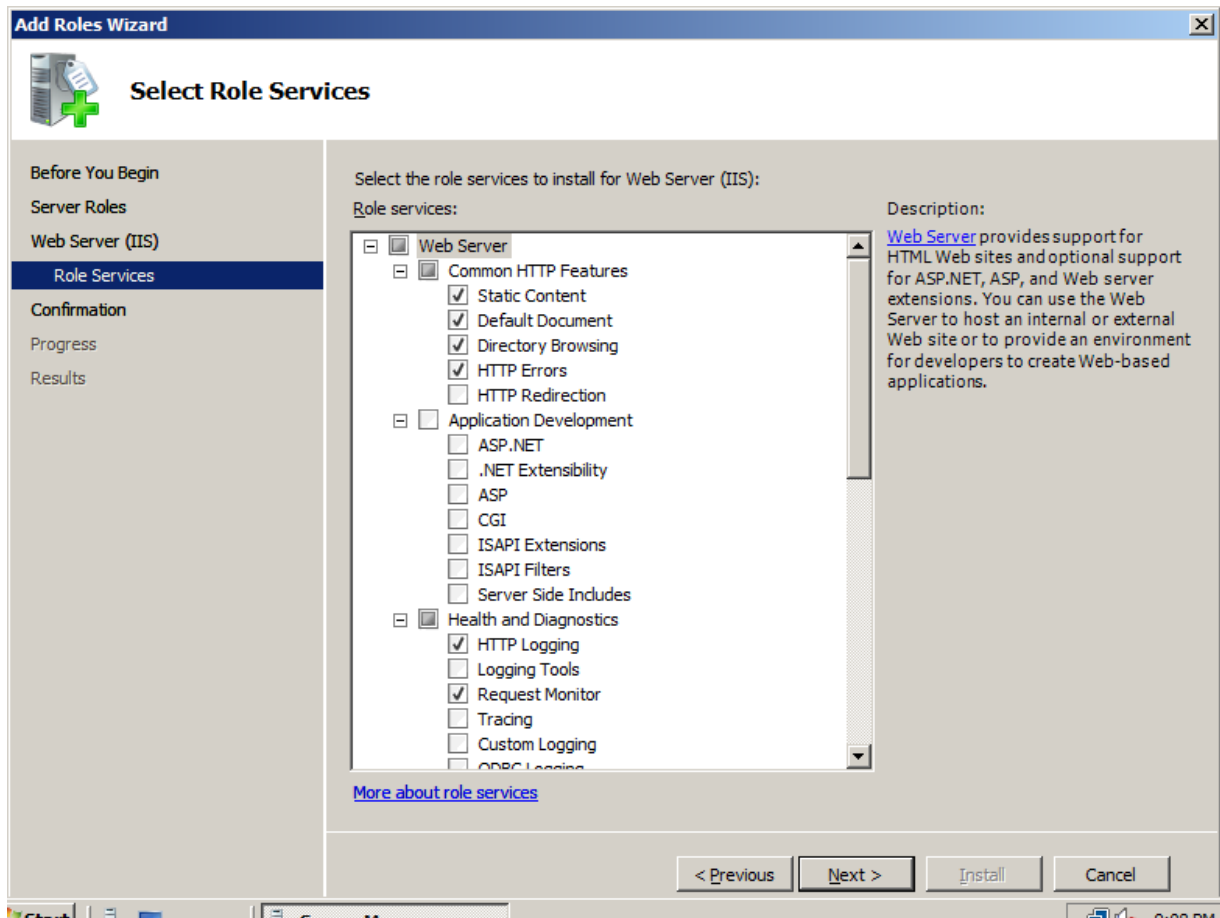


4) Instalación del Servidor WEB

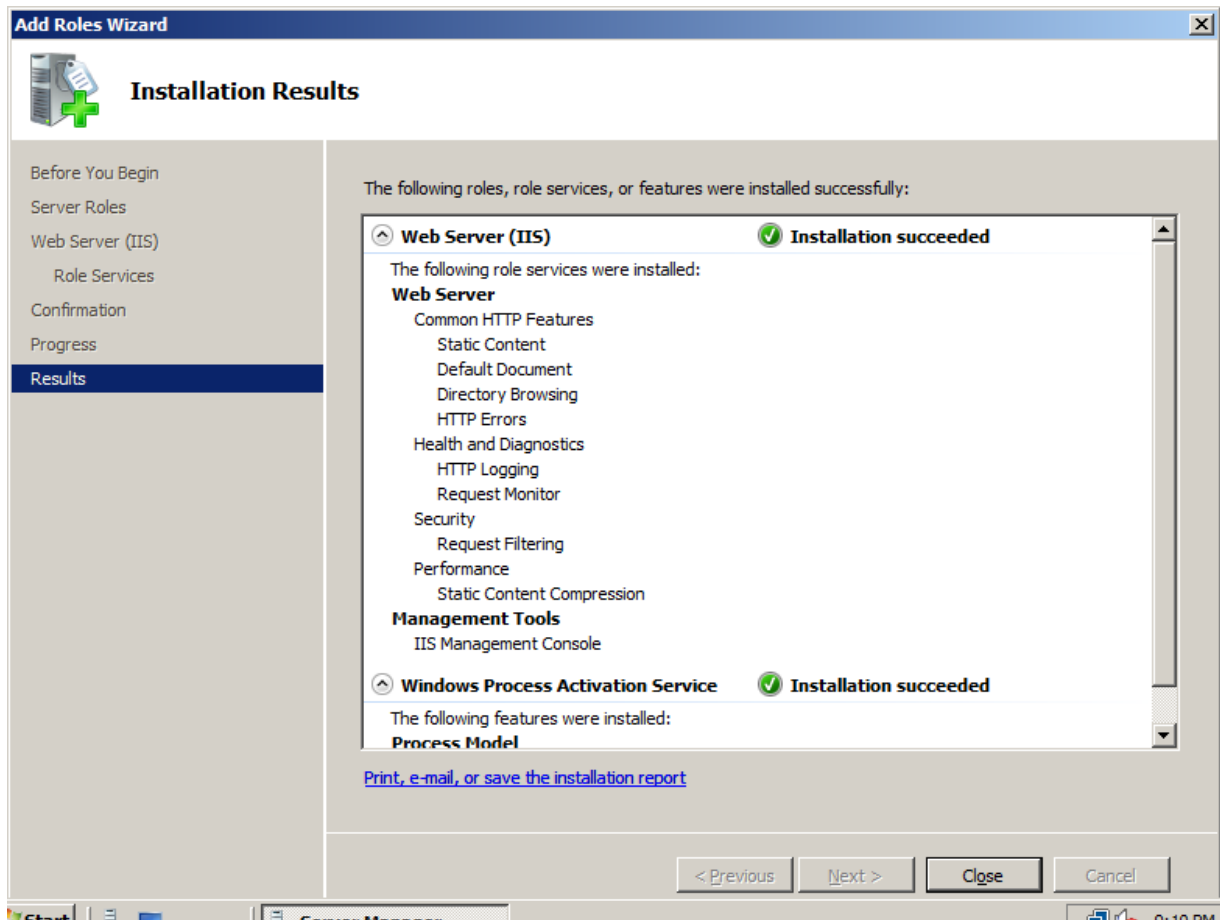
Abra el server manager y agregue el rol del Web Server.



Instale las características (features) adicionales que solicite el servidor.



Verifique la instalación y el funcionamiento del servicio.



Abra el Internet Information Server Service Manager.

